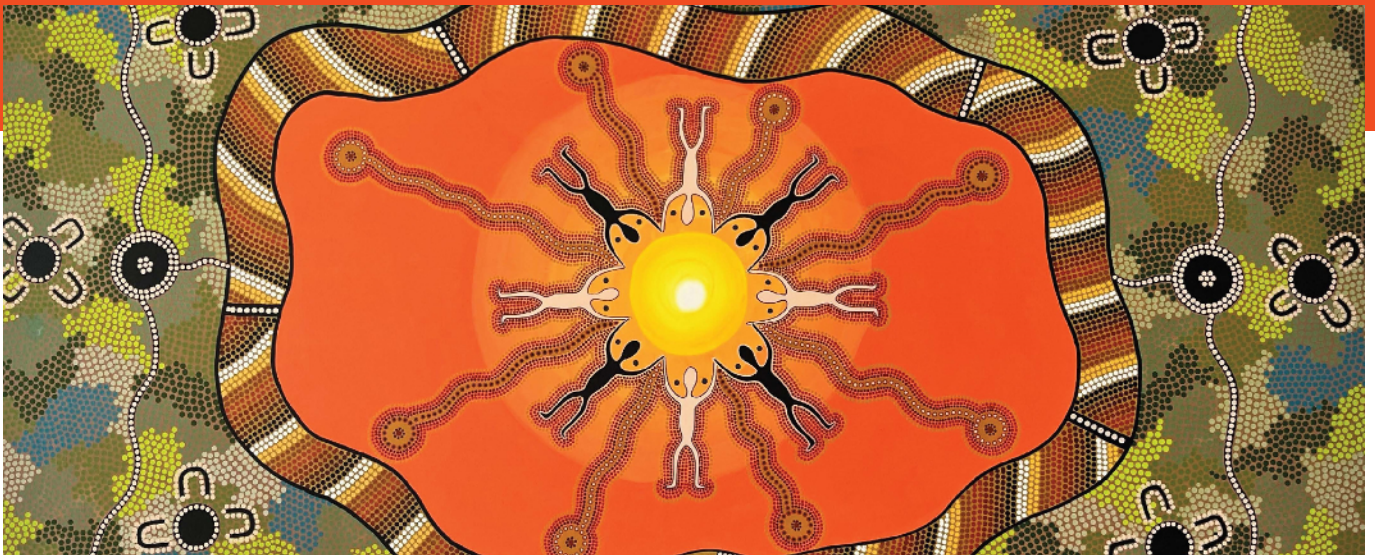


Graduate Diploma in Indigenous Health Promotion (SEWB)



A unique opportunity to receive a postgraduate degree from The University of Sydney School of Public Health

- ▶ Learn from a team of Aboriginal and Torres Strait Islander academics how to promote social and emotional wellbeing (SEWB) in your community
- ▶ Delivered fully online over 12 months
- ▶ Commonwealth Supported Places available
- ▶ Applications now open

Are you an Aboriginal and Torres Strait Islander healthworker with an interest in social and emotional wellbeing or mental health? Do you want to take your career to the next level? This course may be for you.

SEWB describes the holistic understanding of health that many Aboriginal and Torres Strait Islander peoples have. It includes cultural, spiritual, social and emotional wellbeing of the individual, family and wider community. It also considers a variety of factors that contribute to health such as policy and the environment.

Promoting SEWB over mental health is a more effective and all-encompassing way to address the myriad factors that contribute to health and wellbeing.

Apply now and be on the path to joining our cohort of graduates, many of whom have fulfilling careers in a variety of sectors including community, health, government and education.



Learn to work with your community

Throughout the course, you will learn to:

- identify the SEWB health priorities, needs and strengths of your community
- work in partnership with your community to develop SEWB health promotion and prevention programs
- implement and evaluate these programs in community, ensuring continued improvement

Where the course can take you

On completion of your studies, you will be able to:

- address any SEWB issue using best-practice health promotion and prevention tools
- act to improve the SEWB of your community and the wider population
- progress your career and act as a role model to your family and community
- enrol in higher university degrees

What study looks like

The course can be undertaken fully online over 2 semesters (12 months). It consists of 6 units of study delivered as blocks throughout the year, they are:

Block 1: Community Profiling and Setting Priorities

Block 2: Health Promotion Program Planning

Block 3: Goals, Objectives and Strategies

Block 4: Health Promotion Communication

Block 5: Indigenous Research and Program Evaluation

Block 6: Art, Science and Politics of Prevention

Course fees

Commonwealth Supported Places (CSP) are available for this course. Other support includes:

- access to one-on-one tutorial support
- all resources and course materials provided

Entry requirements

You must have:

- at least three years relevant work experience in SEWB, mental health or a health-related role
- proof of prior learning (including technical and vocational training [TAFE] or other university study)
- a letter from your employer expressing their support for your study plans OR a personal statement explaining how the course will enhance your professional development
- a statement of Aboriginal and Torres Strait Islander identification
- willingness to study online for one year

For more information

Email: sph.gdihp@sydney.edu.au

Phone: +61 2 9114 4604

Web: <https://www.sydney.edu.au/courses/courses/pc/graduate-diploma-in-indigenous-health-promotion.html>