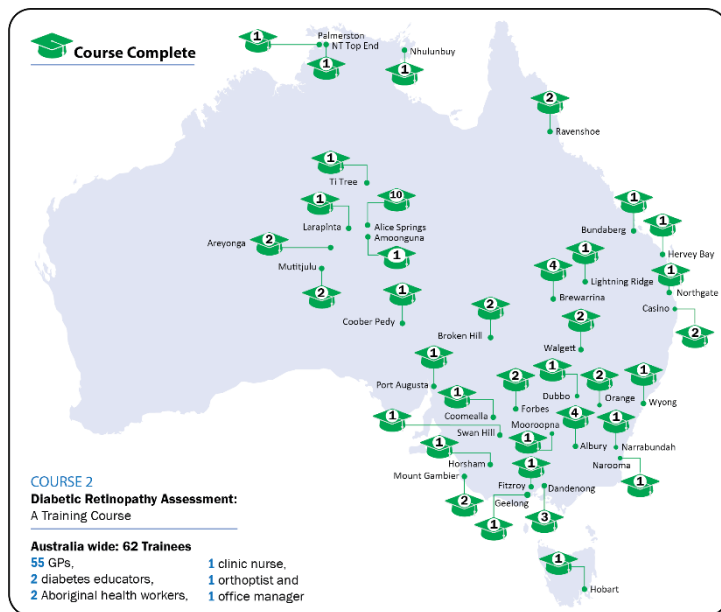
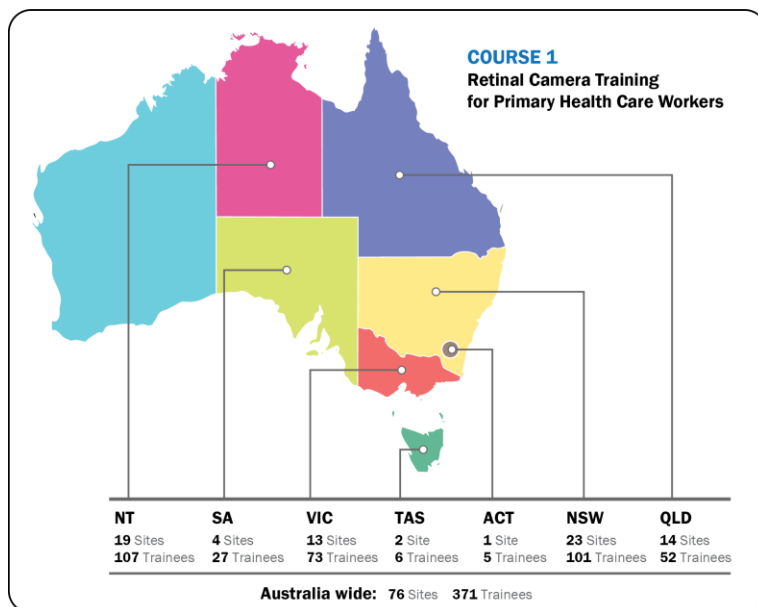


Provision of Eye Health Equipment and Training Project Update - February 2019

Course update – as at 31 December 2018



For an up-to-date list of locations and more information on the project, visit [this page](#)

Workshop

On 12-13 November 2018, we held the *Embedding Retinal Photography in Primary Health Care* workshop. This workshop was predominantly Indigenous led with 56 participants representing 37 organisations across the primary health care sector in Australia. Input from participants at the workshop will critically guide the next phase of the project implementation – “Embedding” component – which aims to support health services to use and integrate the retinal camera within their primary care systems and processes. This work will occur over the remainder of the project period (to June 2020), with overall approaches developed but their implementation tailored to the various regions and settings in which the cameras are being used.

The Project Consortium will meet in February 2019 to determine required modifications to the training courses, and develop resources to support the implementation of retinal cameras into health services, guided by key recommendations from the workshop.



“Embedding Retinal Photography into Primary Health Care” workshop participants

National teleconference

Conducted quarterly, the national teleconferences provide opportunities for staff from health services receiving a camera to share success stories, progress and challenges with peers, project consortium members and the equipment supplier, OptiMed. The last webinar was on 21 November 2018, and the next one is scheduled for **20 February 2019** (10:30am AEDT) and will run for approximately 30 minutes.

Course 1: Retinal Camera Training for Primary Health Care Workers evaluation

As of 31 December 2018, 371 course participants have been trained via online modules plus face-to-face training. A range of primary health care staff were trained, including nurses (34.7%), Aboriginal or Torres Strait Islander health workers (15.6%), Aboriginal and Torres Strait Islander health practitioners (14.8%), and GPs (14.2%). Almost all of the participants (99.7%) were very satisfied or satisfied with the course. We would like to thank The Fred Hollows Foundation for funding upskilling visits to health services after they have received their cameras and this training.

Course 2: Diabetic Retinopathy Assessment: A Training Course evaluation

As of 31 December 2018, 62 course participants have completed course 2. 92.9% participants stated at the completion of the course that they were entirely able to utilise MBS item numbers 12325 and 12326 correctly and 83.9% of participants stated at the completion of the course that they were entirely able to identify and grade the lesions of diabetic retinopathy according to evidence-based guidelines.