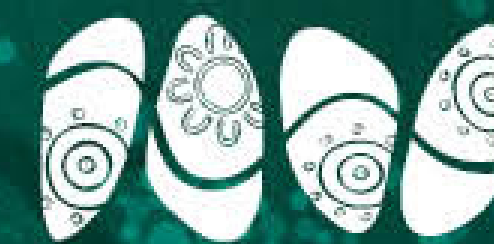




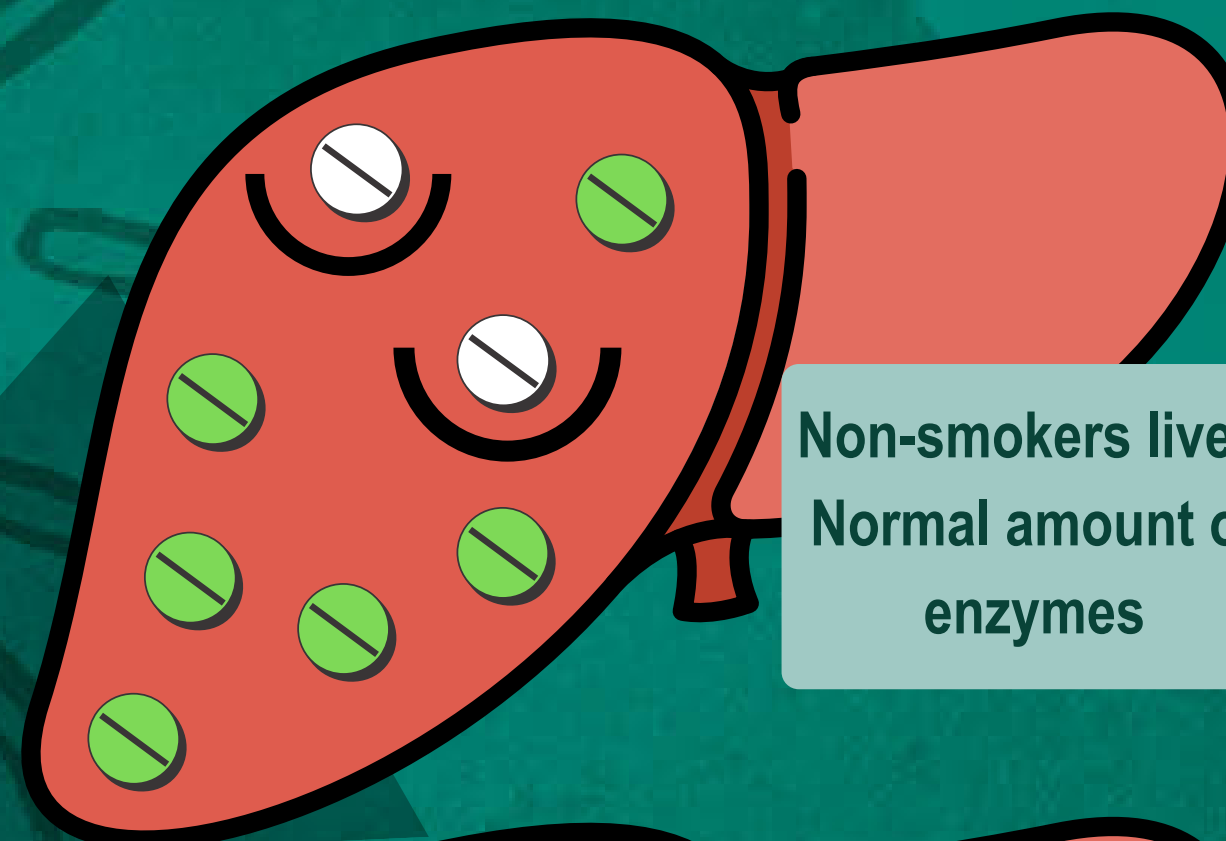
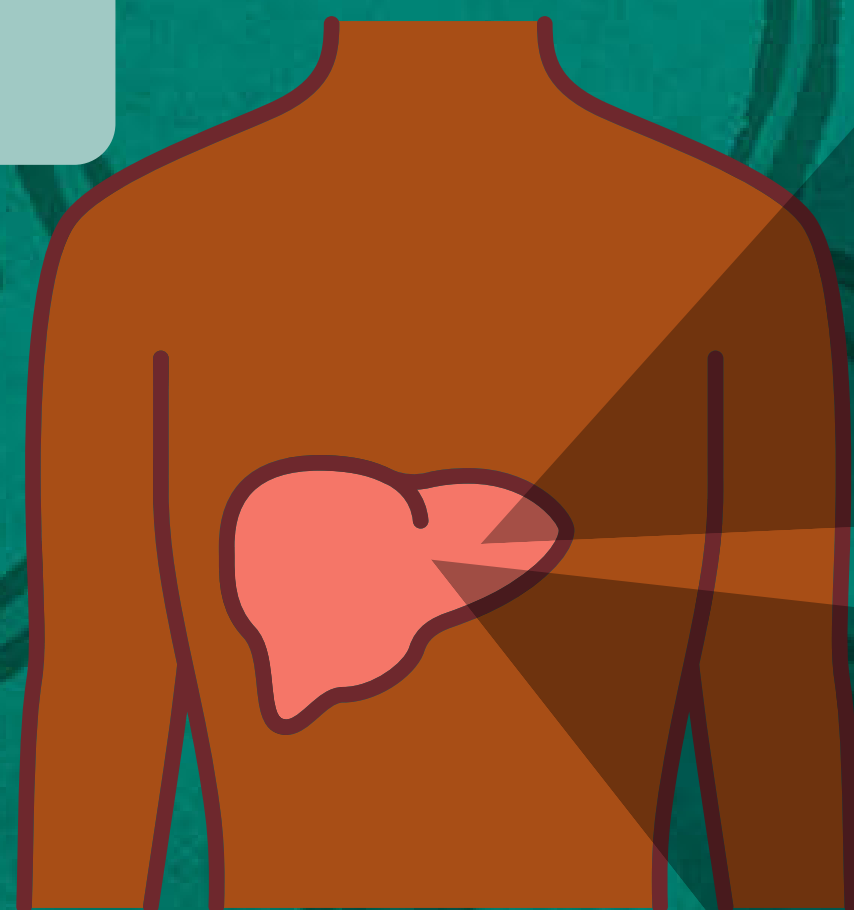
Smoking affects the way your medications work.



Ngamari Free

Smoking tobacco makes your liver filter too much of medication meaning your body doesn't get the right amount of medication.

when you take medication it is filtered through your liver, before going into your blood and being sent out to your organs.



Non-smokers liver:
Normal amount of enzymes



smokers liver: too many enzymes

Smoking tobacco makes your liver filter too much medication meaning your body will get less medication

Some chronic illness medications affected by smoking.

Beta blocker

Lowers blood pressure.

Warfarin

Treats existing blood clots and stops future clots from forming.

Clopidorel

Stops blood clots from forming.

Insulin

Treats diabetes and insulin resistance. Helps the body use up glucose .

Theophylline (Theo24)

Treats clogged airways

Live long, stay strong and breathe easy.

Call the No More Ngamari team on (08) 9690 2888 and enrol in the free 12 week quit support program.

Telephone: (08) 9690 2888

65 Wellington Street, Northam, Western Australia 6401

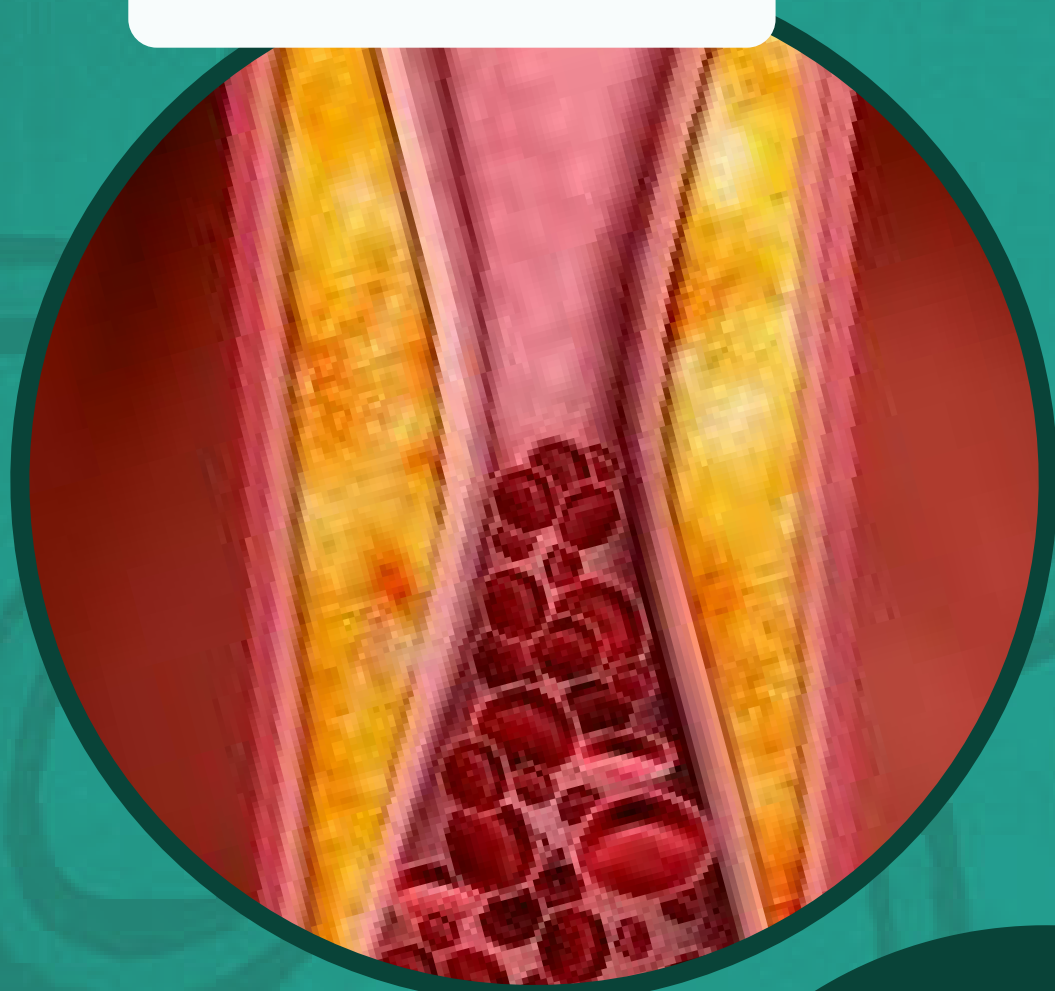


Wheatbelt Aboriginal Health Service

WA Country Health Service

Risks of smoking with chronic illness:

Blood vessels
to narrow.



Heart attack.



Stroke.



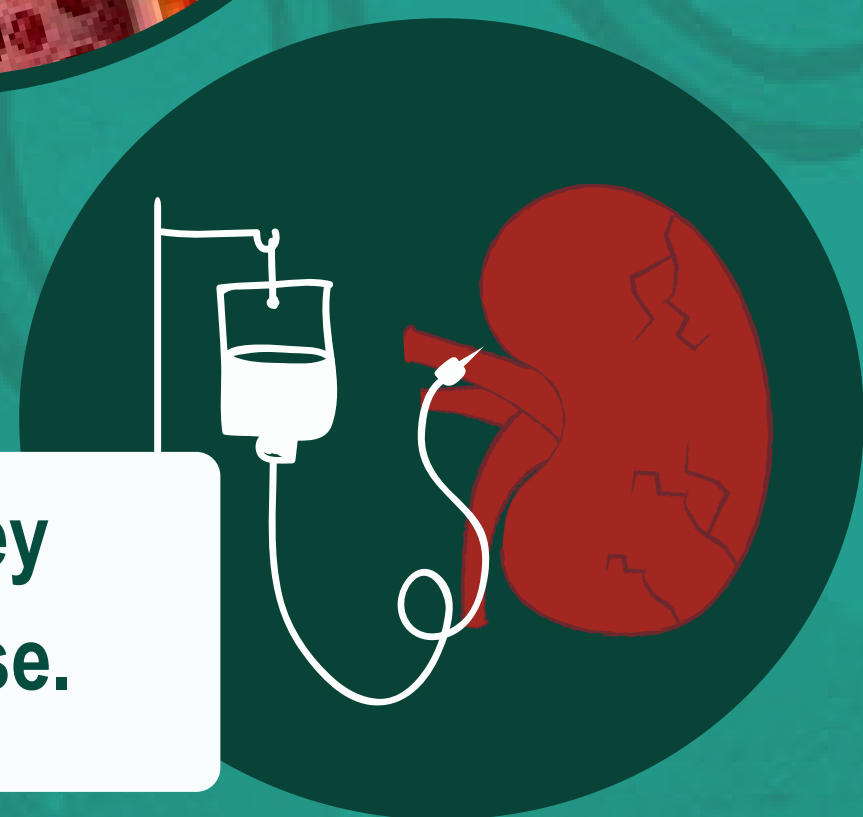
Affected
medications.



Damaged
airsacs.



Kidney
disease.



More hospital
visits.



Live long, stay strong and breathe easy.

