



WANTED Aboriginal Lived Experience Advisory Group (ALEAG) members

Consumers of Mental Health WA (CoMHWA) is seeking applications from Aboriginal people in the country regions with a lived experience of mental health, to become a member of our new Aboriginal mental health advisory committee, the **Aboriginal Lived Experience Advisory Group (ALEAG)**

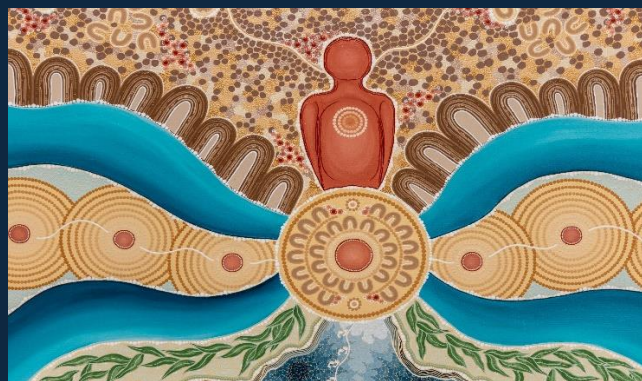
Members of the **ALEAG** will receive a payment for their attendances at monthly meetings and light catering will be provided

*** Country members will need access to Microsoft Teams to join the meetings**

CoMHWA recognises that a consumer-led organisation is essential to achieving a strong, assertive, independent voice for social changes that reflect the needs and priorities of Aboriginal people and others with mental health issues

The **Aboriginal Lived Experience Advisory Group (ALEAG)** will provide CoMHWA with crucial information and advice from its members' own unique lived experiences, and their viewpoints of AMH issues today. This will be utilized to assist CoMHWA meet Aboriginal consumer needs across WA

If you would like to apply, please ring **Phill Moncrieff**, Policy and Research Officer, Aboriginal Mental Health at CoMHWA on **0466420941** or email **pmoncrieff@comhwa.org.au**



Art by Yamatji artist Chynna Chadderton 'Lived Experiences'

